

# INSTALLATION

## Tools Required:

Flat Screwdriver  
Super glue (optional)

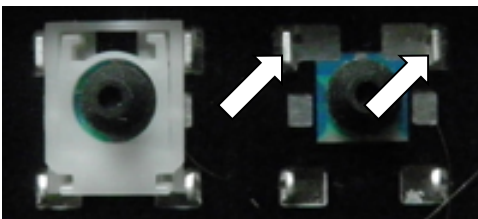
Difficulty: **Easy**

### **Step One – Verify all materials are included.**

Be sure your purchase contains the materials you've requested. This should include the key cap itself, the hinge mechanism and a rubber cup (optional) which will be under the key when install is finished.



### **Step Two – Separate hinge mechanism from key cap and begin installation.**



Hinges are pre-attached to each key for protection during shipping and must be removed to install. Take note of the orientation of the hinge mechanism to help you with placement.

**NOTE: Use caution when separating the pieces, as they are very fragile!**

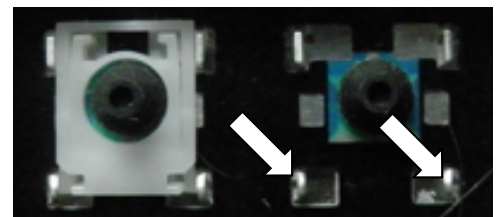
To install the hinge mechanism, begin by hooking one end over the protruding metal tabs located on the keyboard. A small flat screwdriver or blunt faced tweezers will assist you in this step.

Keep the flattest side of the hinge facing up so it is able to properly receive the key cap.

### **Step Three – Complete hinge mechanism install.**

Place the other ends of the hinge mechanism into the holes on the lower brackets attached to the keyboard and it will lock into place.

Be careful with this step, as forcing the hinge or placing too much stress on the hinge may cause it to break.



### **Step Four – Install rubber cup (optional) and press key cap into place.**

With the hinge now properly installed, you can place the optional rubber cup if needed. Apply a **small** amount of glue around the **OUTER** rim of the cup and seat it in the center of the hinge assembly. Sometimes the rubber cup will firmly sit in place by itself, but it is better to use adhesive.

**Allow ample drying time before installing the key cap!**

Then, simply place the correctly oriented key cap over the hinge mechanism and press down. If the key cap clicks into place, you're all done!



uikfix Laptop Keyboard Keys